

PUBLICATIONS DEPARTMENT
REPRO-COPY AND LABEL WITHDRAWAL SHEET

PART NUMBER 2180001 REV B DATE 4-19-85

TITLE Crown 72 Series 18M-72 Merchandise

SPECIAL INFORMATION _____

REQUESTED BY D. Carlson TO WHOM SENT Same

PROBABLE DATE OF RETURN 5-31-85 ACTUAL DATE OF RETURN _____

**SUPPLEMENTAL GENERAL PROCEDURES FOR THE NATIONAL VENDORS
CROWN SEVENTY TWO SERIES 18M-72 MANUAL
CIGARETTE MERCHANDISER**

The Crown Seventy Two Series 18M-72 is basically the same Merchandiser as the 22M-72 except for the Lower Cigarette Magazine and the Lower Apron Assembly in the Delivery Mechanism.

This Supplement covers the loading of the Lower Cigarette Magazine.

The first Column from the right side of the Lower Cigarette Magazine, as seen by the operator as he looks into the front of the Merchandiser, will vend only U. S. regular, king-size, box, or 100 mm packs. When shipped, the right-hand Column is set to vend U. S. king-size packs; and the second and third right-hand columns are set to vend short Canadian 25 box packs; and the three left-hand columns are set to vend short Canadian 20 box packs.

I. To Load Canadian Short 20 Box Packs:

- A. Move the Shift Column Pack Spacer to the fully extended position.
 1. Insert a finger under the Pack Spacer.
 2. Lift the Pack Spacer and place it in the fully extended position.
 3. Move the Pack Spacer down into the locked position.

- B. Load the Shift Column with the desired brand, tax stamp forward, and to the desired capacity - a maximum of 15 packs - and push the Shift Column to the rear of the Magazine. When the Shift Column is pushed back, one of the boxes that is placed in the Column will remain in the Front Column and 14 boxes will stay in the Shift Column. The box which remains in the Front Column will hold the Shift Column back to permit the loading of the Front Column.

- C. Load the Front Column with the same brand - tax stamp forward - to the desired capacity, a maximum of 14 additional boxes.

II. To Load Canadian Long 20 Box Packs.

- A. Move the Shift Column Pack Spacer to the partially extended position.
 1. Insert a finger under the Pack Spacer.
 2. Lift the Pack Spacer and place it in the partially extended position.
 3. Move the Pack Spacer down into the locked position.

- B. Load the Column per procedure I.

III. To Load Canadian Short 25 Box Packs Follow Steps I-A to I-C Using Short 25 Box Packs.

IV. To Load Canadian Long 25 Box Packs Follow Steps II-A and II-B Using Long 25 Box Packs.

V. To Load U. S. King-Size Packs In The Right-Hand Column.

- A. Move the Shift Column Pack Spacer to the partially extended position.
 1. Insert a finger under the Pack Spacer.
 2. Lift the Pack Spacer and place it in the partially extended position.
 3. Move the Pack Spacer down into the locked position.

- B. Load the Shift Column with the desired brand, tax stamp forward, and to the desired capacity - a maximum of 12 packs - and push the Shift Column to the rear of the Magazine. When the Shift Column is pushed back, one of the packs that is placed in the Column will remain in the Front Column and 11 packs will stay in the Shift Column. The pack which remains in the Front Column will hold the Shift Column back to permit the loading of the Front Column.

- C. Load the Front Column with the same brand - tax stamp forward - to the desired capacity, a maximum of 11 additional packs.

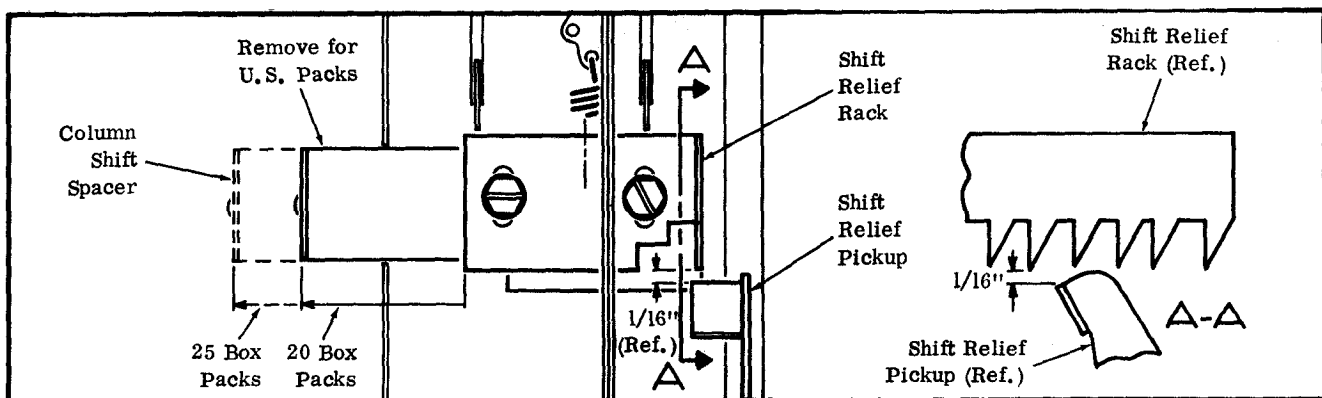


Figure 1. Adjustment of Shift Relief Rack and Column Shift Spacer

VI. To Load U. S. Regular Packs In The Right-Hand Column.

- A. Move the Shift Column Pack Spacer to the fully extended position.
1. Insert a finger under the Pack Spacer.
 2. Lift the Pack Spacer and place it in the fully extended position.
- B. Load the Column with U.S. regular packs per procedure V.

VII. To Load U. S. 100 mm Packs In The Right-Hand Column.

- A. Move the Shift Column Pack Spacer flush against the Shift Column Rear Wall.
1. Insert a finger under the Pack Spacer.
 2. Lift the Pack Spacer and place it flush against the Shift Column Rear Wall.
 3. Move the Pack Spacer Down into the locked position.
- B. Load the Column with U. S. 100 mm packs per procedure V.

VIII. To Convert Any of The Three Left-Hand Or Second And Third Right-Hand Columns To Vend Packs, Other Than The Size They Are Set For.

- A. Move the Movable Wall to the desired position. The extreme right is for Canadian 25 box packs, the middle position is for Canadian 20 box packs,

and the extreme left position is for U. S. cigarette packs.

1. Remove the Lower Cigarette Magazine from the Merchandiser.
2. Remove the 4 Screws which attach the Movable Wall.
3. Move the Movable Wall to the desired position.
4. Install the 4 Screws removed in step 2.

B. Adjust The Shift Column Spacer.

1. Remove the Lower Cigarette Magazine from the Merchandiser.
2. Loosen the two Screws and move the Shift Column Spacer to the extreme left, as seen by the operator as he looks into the rear of the Lower Cigarette Magazine, for Columns to vend Canadian 25 box packs. See Figure 1. Tighten the two Screws.
3. Loosen the two Screws and move the Shift Column Spacer to the extreme right, as seen by the operator as he looks in the rear of the Lower Cigarette Magazine, for Columns to vend Canadian 20 box packs. See Figure 1. Tighten the two Screws.
4. Remove the Shift Column Spacer for Columns to vend U. S. Cigarette packs.

C. Adjust The Shift Relief Rack.

Loosen the two Screws and adjust the Shift Relief Rack so there is a 1/16" clearance between the tooth on the Shift Relief Rack, and the edge of the Shift Relief Pickup. See Figure 1.

PARTS LISTING

The following is a list of part names and Numbers of those items which are peculiar to the 18M-72 Cigarette Merchandiser. All other items are the same as those used in the 22M - 72 Merchandiser.

Description	Part Number	Number Required	Column Assembly, Lower Shift Canadian	218-7232	5
Apron Assembly, Main, Lower	218-6314	1	Divider Assembly, Lower	218-7218	5
Blank, Pull Knob	218-6307	5	Magazine Assembly, Cigarette	218-7213	1
Blank Plate, Pull Knob	218-6308	5	Lower		
Spacer, Long, Apron	218-6303	4	Spacer, Shift Column	218-7234	5
Spacer, Right, Apron	218-6304	1	Washer, Shift Column	218-7235	10
Spacer, Short, Apron	218-6305	1	Clip, Pack Spacer	222-6037	5
Casting Assembly, Ejector, Canadian	218-6309	5	Rejector Assembly, Slug	218-5900	1
Magazine Assembly, Cigarette Lower	218-7212	1	Arm Assembly, Scavenger	222-5918	1
			Chute Assembly, Coin	117-5902	1
			Rejector, Slug	214-5901	1